

“THE LORD IS MY ROCK AND MY FORTRESS AND MY  
DELIVERER, MY GOD, MY ROCK, IN WHOM I TAKE REFUGE, MY SHIELD,  
AND THE HORN OF MY SALVATION, MY STRONGHOLD.”

PSALM 18:2

# Coronavirus (COVID-19) Pandemic Resources

Please check back frequently for changes and updates as this situation continues to develop.

---

- [President's Message](#)
- [Families & Individuals](#)
- [Featured Resources](#)
- [Ministry Partners](#)
- [Congregations & Schools](#)
- [News & Articles](#)

## President's Message



In this video message, LCMS President Rev. Dr. Matthew C. Harrison encourages and suggests resources for congregations as they begin or plan for resuming in-person worship.

**View video with American Sign Language:** [YouTube](#) • [Vimeo](#)

## Previous messages

- ▶ [05/20/2020](#)
- ▶ [04/30/2020](#) — includes American Sign Language version
- ▶ [04/02/2020](#) — includes video transcript
- ▶ [03/27/2020](#) — includes American Sign Language version
- ▶ [03/13/2020](#) — includes American Sign Language version

[View all American Sign Language version videos](#)

# Featured Resources

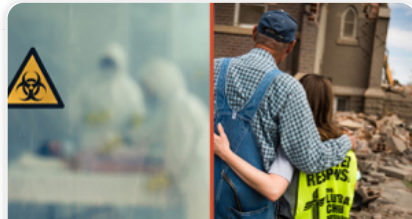
---



## New 'Making Disciples for Life' Bible studies to address wide range of topics

The Bible studies are particularly suited to the difficulties of COVID-19.

[Read More](#)



## Quick reference guide available for times of disaster

The easy-to-use guide offers advice on what to do before, during and after a tragedy or disaster.

[Read More](#)



## Grants assist church workers impacted by pandemic

As of April 30, \$321,452 had been distributed in 229 grants to workers across the Synod.

[Read More](#)

[View more resources](#)

[Return to top](#)

---

## Congregations and Schools

[Resources for reopening](#)

## Resources for reopening

Planning to reopen for in-person services? Use the resources in this Welcome Back media kit to get the message out to your members and community.

- ▶ [Welcome Back media kit resources](#)

## Resources for worship

These resources are intended to help pastors plan and lead worship services.

- ▶ [Collects for the Present Pandemic](#)
- ▶ [Propers in Time of Pestilence \(PDF\) | \(Word document\)](#)
- ▶ [Concordia Publishing House resources](#)
- ▶ [Church art collection for congregations and schools](#)
- ▶ [Three-Year Series A Prayers](#)
- ▶ [One-Year Series Prayers](#)

## Resources for study

Reaching people outside of your church, especially during a time of social restriction, can be incredibly difficult. See how you can learn and teach remotely with these Christian educator resources.

- ▶ [Concordia Publishing House resources](#)

## Resources for congregations and church workers

Find Bible studies and more resources to navigate these times.

- ▶ [Making Disciples for Life Internet Resource Center](#)

## Resources for livestreaming

Concordia Publishing House is offering access to its Lutheran Service Builder software and related licenses at no charge until the end of sheltering in place.

- ▶ [Information on the limited promotional license](#)
- ▶ [Instructions for livestreaming your church service](#)

## The Lord's Supper

“The sole purpose of this response is to promote and encourage the proper practice of the Lord’s Supper in faithfulness to the teaching and example of Christ.”

- ▶ [CTCR statement — Communion and COVID-19 \(3-21-2020\)](#)
- ▶ [Addendum to Communion and COVID-19 — "One little \*word\* can fell him"](#)
- ▶ [Summary of "One little \*word\* can fell him"](#)

## LCMS Youth Ministry and School Ministry

During the COVID-19 pandemic, LCMS Youth Ministry and LCMS School Ministry are providing encouragement and new resources for your ministry.

- ▶ [LCMS Youth Ministry COVID-19 Pandemic resources](#)
- ▶ [LuthEd COVID-19 Pandemic resources](#)

## CDC Guidance for Community and Faith-Based Organizations

The Centers for Disease Control and Prevention website offers practical guidance for churches as they reopen.

- ▶ [Read CDC Guidelines](#)

## Informational resource about SBA/PPP loans

Lutheran Church Extension Fund hosted a web discussion about the SBA/PPP forgiveness process.

- ▶ [SBA representatives offer helpful advice and insights](#)

## Families and Individuals

---

### Resources for home

Christ’s love and message can be overshadowed amidst nervousness, uncertainty and distress.

Show families how they can draw closer to Him during these times with devotional material to re-

Show families how they can draw closer to Him during these times with devotional material to re-center on Christ while at home.

- ▶ [Concordia Publishing House resources](#)
- ▶ [How to do family devotions](#)
- ▶ [40 Daily Devotions of God's Comfort](#)
- ▶ [LCMS Infographic — The Family Altar](#)

## Financial relief

Soldiers of the Cross Amplified grants support those who work for LCMS churches, schools or organizations.

- ▶ [Soldiers of the Cross Amplified](#)

## Resources for distance learning

Gospel-centered resources to assist your home education.

- ▶ [Lutheran Hour Ministries resources](#)

## Supporting your congregation

For our congregations to survive — and thrive — our worship offerings must continue as much as possible.

- ▶ [Giving offerings to my congregation in difficult times](#)
- ▶ [Tools for online giving for congregations](#)

[Return to top](#)

---

## Resources from our partners in ministry

---

These key partners have collected resources to support physical, emotional and financial health during

these challenging times. LCMS ministries, workers and members are encouraged to access and make use of these resources as applicable.

**Explore these resources by clicking each logo below:**



*\*Visit these sites frequently for new and updated information!*

[View more partners](#)

[Return to top](#)

# News and Articles

---

## Reporter

International Lutheran Council responds to COVID-19 with practical care and the Gospel

*Wednesday, July 15, 2020*

From the mission field: COVID-19 international updates

*Tuesday, July 7, 2020*

Summer 'Engage': Serving in the time of COVID-19

*Tuesday, July 7, 2020*

## LCMS International Mission

It's Summertime. Where Are the Missionaries?

*Thursday, July 2, 2020*

Keeping Connected During COVID-19

*Friday, May 29, 2020*

Project 24 Responds to the Coronavirus

*Tuesday, April 14, 2020*

## KFUO Radio

---

Let's Talk! The Rev. William Cwirla Is In: Affects of the Pandemic

*Friday, July 17, 2020*

The Coffee Hour – Community Health Evangelism

*Thursday, July 16, 2020*

The Student Union – What Can We Learn from the Black Death? (Rebroadcast)

*Wednesday, July 15, 2020*

The Coffee Hour – LCEF Providing Support through COVID-19 Pandemic



## The Coffee Hour – Missionary Update from Cambodia during COVID-19 Pandemic

Tuesday, July 7, 2020

# Commentaries

---

Your first source for insight and perspective from LCMS ministry leaders.

▶ [Read More](#)

[Return to top](#)

---

### **The latest news and resources from other partners in ministry.**

- ▶ [Concordia Seminary, St. Louis](#)
- ▶ [Concordia Theological Seminary, Fort Wayne, Ind.](#)
- ▶ [Lutheran Hour Ministries \(LHM\)](#)
- ▶ [Lutheran Women's Missionary League \(LWML\)](#)
- ▶ [Concordia College New York, Bronxville, N.Y.](#)
- ▶ [Concordia University, Ann Arbor, Mich.](#)
- ▶ [Concordia University Chicago, River Forest, Ill.](#)
- ▶ [Concordia University, Irvine, Calif.](#)
- ▶ [Concordia University, Nebraska, Seward, Neb.](#)

- ▶ [Concordia University, Portland, Ore.](#)
- ▶ [Concordia University, St. Paul, St. Paul, Minn.](#)
- ▶ [Concordia University Texas, Austin, Texas](#)
- ▶ [Concordia University Wisconsin, Mequon, Wis.](#)

[Return to top](#)

## JOIN US ON THE JOURNEY



## Lutherans Engage the World



Engaging the Church in the work of witness and mercy across the globe in our life together.

[Learn more](#)

## The Lutheran Witness

Interpreting the contemporary world from a Lutheran Christian perspective



[Learn more](#)

## Concordia Publishing House



## Our Ministries

[Black Ministry](#)

[Campus Ministry](#)

[Church Planting](#)

[Church Revitalization](#)

[Deaconess Ministry](#)

[Disaster Response](#)

[Grants](#)

[Health Ministry](#)

[Hispanic Ministry](#)

[Life Ministry](#)

[Ministry to the Armed Forces](#)

[Missionary Service](#)

[Recognized Service Organizations](#)

Rural & Small Town Mission

School Ministry

Soldiers of the Cross

Specialized Pastoral Ministry

Stewardship Ministry

Urban & Inner-City Mission

Veterans of the Cross

Witness & Outreach Ministry

Worship

Youth Ministry

## International Regions



Africa | Asia | Eurasia | Latin America | United States

## Auxiliaries and Partners

Concordia Historical Institute

Concordia Plan Services

Concordia Publishing House

Concordia Seminary, St. Louis

Concordia Theological Seminary, Fort Wayne, Ind.

Concordia University System

Lutheran Church Extension Fund

Lutheran Hour Ministries

Lutheran Women's Missionary League (LWML)

The LCMS Foundation

## Contact Us

 [Email us](#)

 **Church Info Center:** 888-843-5267

 **Staff Switchboard:** 800-248-1930

 **Donor Care Line:** 888-930-4438

 **1333 S. Kirkwood Road, St. Louis, MO 63122-7226**



---

The Lutheran Church--Missouri Synod Inc., including Mission Central (in Mapleton, Iowa), is an IRS registered 501(c)(3) tax-exempt charity.

A contribution designated (restricted) for a specific purpose when accepted, will be used only to fund expenses related to that purpose. Occasionally, we may receive more in contributions for a particular purpose than can be wisely applied to it in the foreseeable future or the purpose may cease to be feasible. In these situations, the LCMS will make reasonable attempts to contact contributors to apply their contribution differently. If a contributor cannot be contacted, the LCMS will use the gift to meet a similar pressing need that most closely matches the contributor's original intent. Consistent with Synod Board policy, no more than 12 percent of a charitable contribution may be applied to administering gifts and communicating with contributors. Contributions received and accepted by the LCMS are deemed to be in agreement with this statement.

Our Tax Identification Number is: 43-0658188

[View Donor Transparency Resources »](#)

---

[Employment](#) | [For the Media](#) | [Site Map](#) | [Privacy](#)

© 2003 – 2020 The Lutheran Church—Missouri Synod. All Rights Reserved.